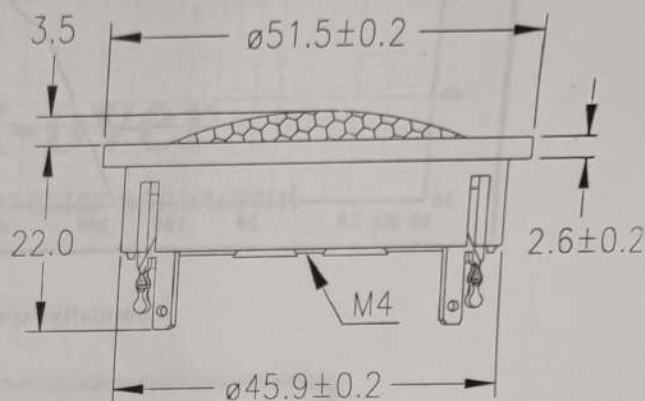
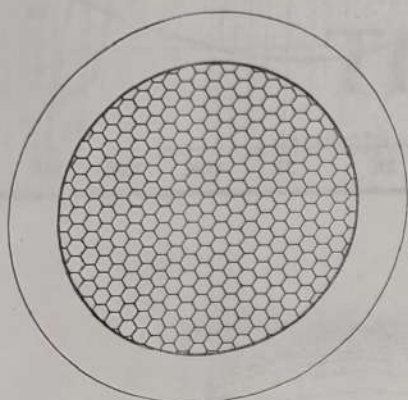




CT25FF001

L0002

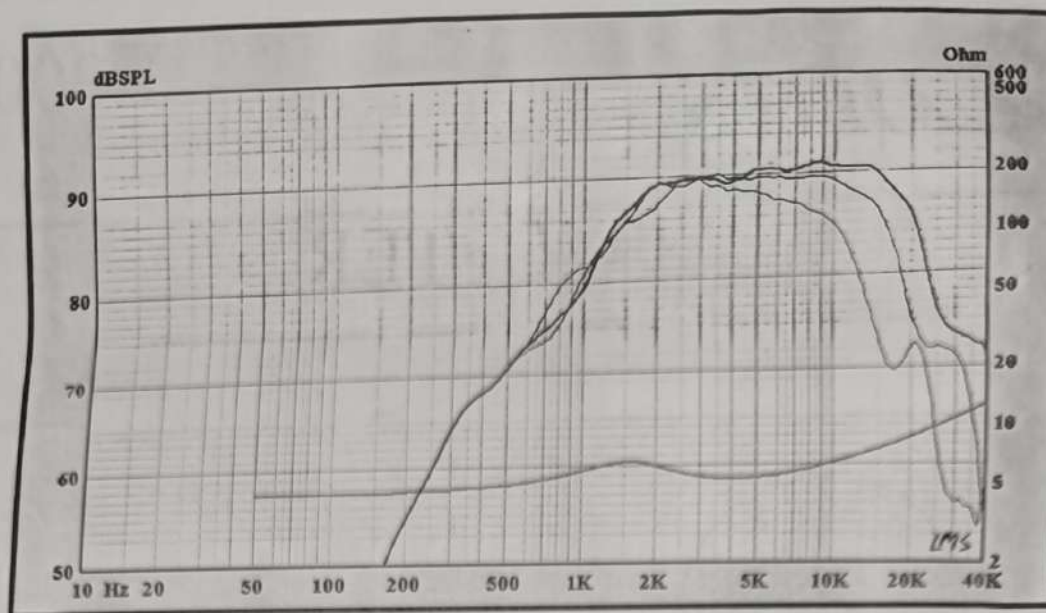
TWEETER



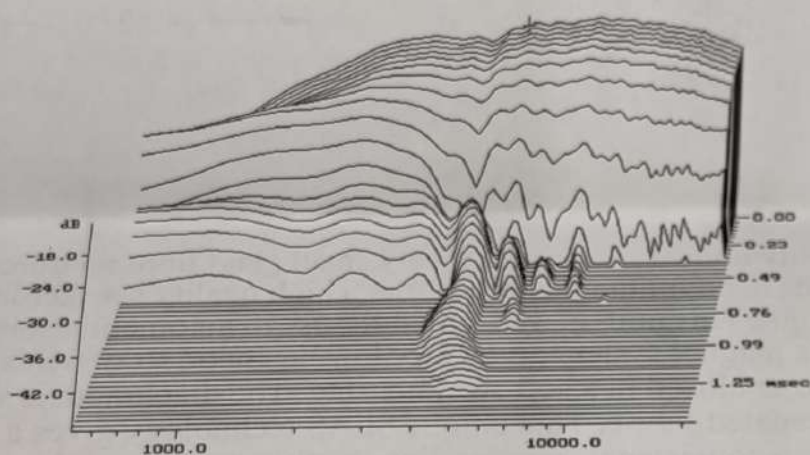
25mm High Fidelity dome tweeter with a very small glass fibre reinforced plastic chassis. The neodymium magnet allows a high quality speaker in a very compact design. This unit is well suited for use in automobile sound. The construction of the magnet system gives very low magnetic stray fields since the magnet is enclosed in a soft steel housing. The diaphragm is vacuum formed from a precoated fabric. This unique SEAS technology gives a vast improvement in consistency compared with other coating methods. Included in the package is a set of mounting accessories.

Careful matching of fabric and coating results in a very smooth frequency response throughout the audible frequency range and gives a very high degree of stability against changes in air temperature and humidity. The voice coil is immersed in magnetic fluid, allowing high power handling capacity and simplified crossover design. A hexa grid protects the diaphragm.

Response curve recorded in anechoic chamber (Free-field, 4 pi radiation) with 0.5m microphone distance. The loudspeaker is mounted in a 0.6m by 0.8m baffle.



Cumulative spectral decay



NOMINAL IMPEDANCE	6 Ohms
RECOMMENDED FREQUENCY RANGE	3000-25000 Hz
SHORT TERM MAXIMUM POWER *	220 W
LONG TERM MAXIMUM POWER *	90 W
CHARACTERISTIC SENSITIVITY (1W, 1m)	89 dB SPL
OPERATING POWER (96 dB SPL, 1m)	5.0 W
AIR GAP HEIGHT	2.0 mm
MAGNETIC GAP FLUX DENSITY	1.3 T
FORCE FACTOR	2.45 N/A
MAGNET WEIGHT	0.01 Kg
TOTAL WEIGHT	0.09 Kg

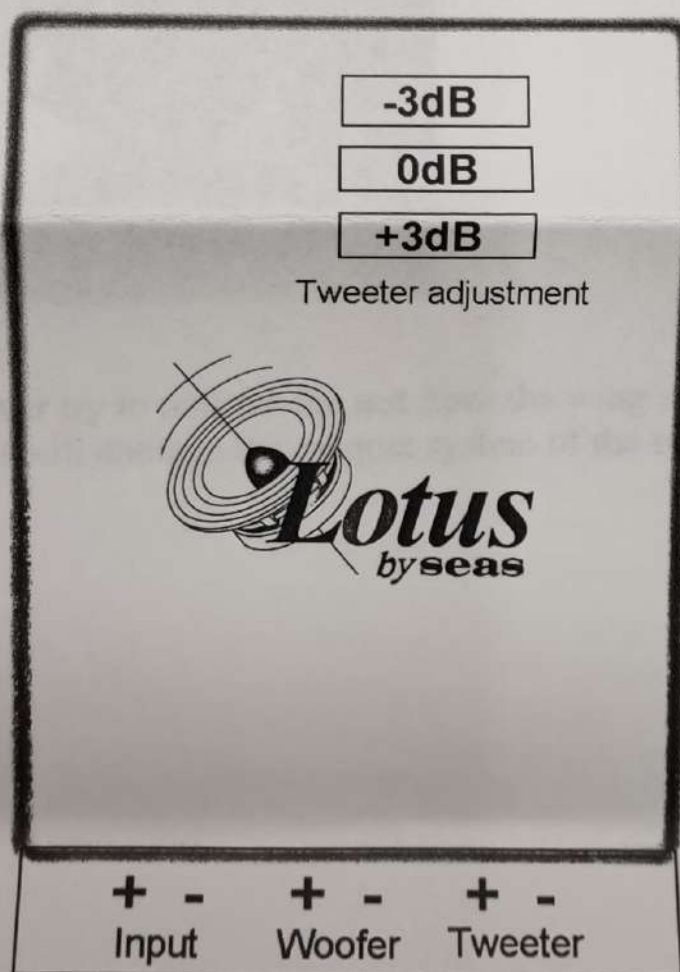
VOICE COIL RESISTANCE	4.8 Ohms
VOICE COIL INDUCTANCE (EQUIVALENT)	0.05 mH
VOICE COIL DIAMETER	26 mm
VOICE COIL HEIGHT	1.5 mm
MOVING MASS	0.3 g
EFFECTIVE PISTON AREA	7.0 sq.cm
LINEAR COIL TRAVEL (p-p)	0.5 mm
FREE AIR RESONANCE	1800 Hz

* IEC 268-5, VIA HIGH PASS BUTTERWORTH FILTER: 3500 Hz 12 dB/oct.



The x-over

Connections and tweeter adjustment

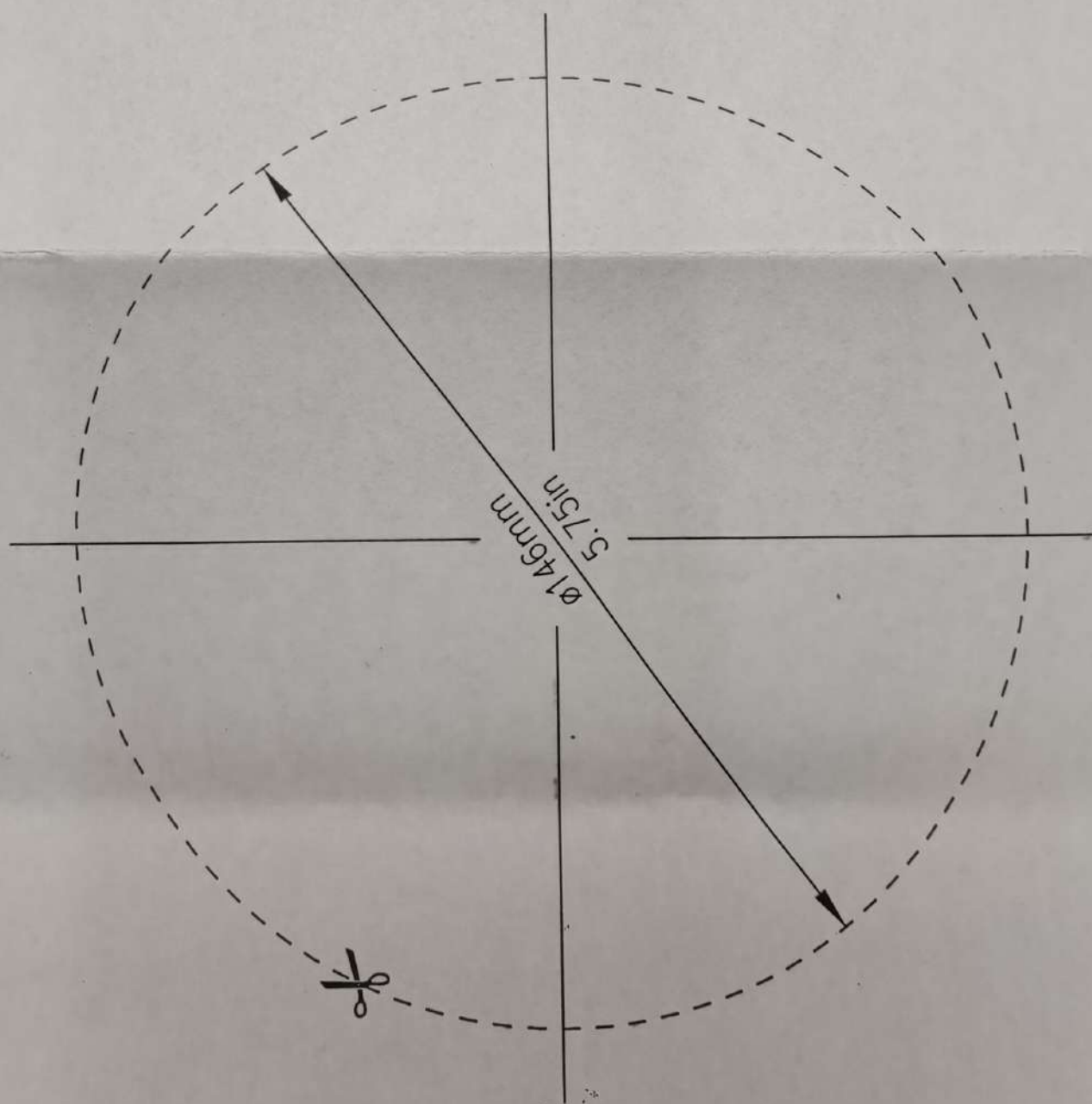




Tweeter mounting



Notice: never try to remove the nut from the wing screw because that will damage the magnet system of the tweeter.

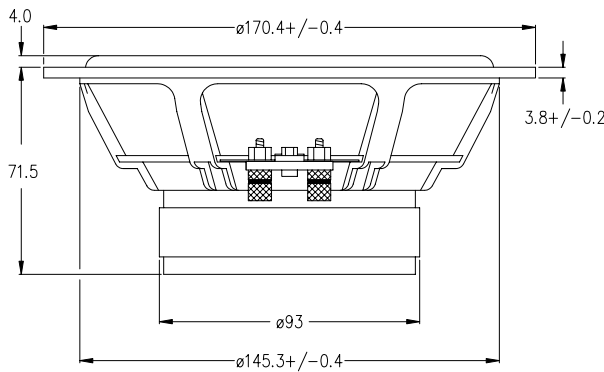
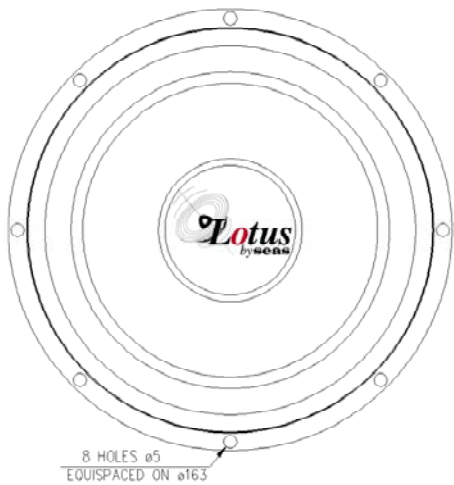




CW17E003

L0013

MID-WOOFER



17cm High-End automotive mid/woofer

The CW17E002 is a High End Car Audio Woofer with low distortion. It is the choice for those seeking a precise and realistic reproduction of the lower and mid frequency range in their cars.

Features:

Optimum shaped polypropylene cone.

T-shaped cross section of the polepiece for low modulation distortion..

Natural rubber surround for optimum performance over a wide temperature range.

Stiff and stable injection moulded metal basket to keep the moving parts in perfect alignment under normal and extreme conditions.

High temperature kapton voice coil.

Screw terminals which ensure excellent long term contact with the speaker cables.

NOMINAL IMPEDANCE	4 Ohms	VOICE COIL RESISTANCE	3,3 Ohms
RECOMMENDED FREQUENCY RANGE	40-3000 Hz	VOICE COIL INDUCTANCE (EQUIVALENT)	0.6 mH
SHORT TERM MAXIMUM POWER *	250 W	FORCE FACTOR	5.5 N/A
LONG TERM MAXIMUM POWER*	80 W	FREE AIR RESONANCE	53 Hz
CHARACTERISTIC SENSITIVITY (1W, 1m)	91.3 dB SPL	MOVING MASS	12.8 g
OPERATING POWER (96 dB SPL ,1 m)	W	AIR LOAD MASS IN IEC Baffle	0.9 g
		SUSPENSION COMPLIANCE	0,7 mm/N
		SUSPENSION MECHANICAL RESISTANCE	1.84 Ns/m
		EFFECTIVE PISTON AREA	136 sq.cm
VOICE COIL DIAMETER	39 mm	VAS	17.0 Litres
VOICE COIL HEIGHT	14.0 mm	QMS	2.47
AIR GAP HEIGHT	6.0 mm	QES	0.50
LINEAR COIL TRAVEL (p-p)	8.0 mm	QTS	0.41
MAXIMUM COIL TRAVEL (p-p)	19.0 mm		
MAGNETIC GAP FLUX DENSITY	0.85 T		
MAGNET WEIGHT	0.42 Kg		
TOTAL WEIGHT	1,41 Kg		

* IEC 268-5

